



## Evolve 65e

# Engineered to deliver professional UC-certified sound on the go

**All day comfort. Never miss a call.**

When you need to be available for calls any time, you need a headset that is comfortable enough to wear all day. The Evolve 65e features a convenient, lightweight, around-the-neck design with snug-fitting oval earbuds. This design provides maximum comfort and ease of use, so you can answer calls and listen to music all day; wherever you are, whatever you're doing.

**Professional UC-certified earbuds. Optimized for use outside the office.**

The Evolve 65e is Skype for Business and Unified Communications (UC) certified, so you can use it for all your important calls in total confidence. This headset provides consistently superior sound and call quality, especially whilst you are outside the office, so you don't need to worry about wind noise or poor connection. Connect to your mobile device or use the Bluetooth adaptor to connect to your computer.

**Stay productive on the go. All-day battery.**

Stay productive on the go, with a battery that's built to go the distance, giving you up to 13 hours of charge. Wherever you need to be, whatever you need to get done, you can be sure that your headset will be able to keep up.

**Customize sound settings with the Jabra Sound+ app.**

The Jabra Sound+ app is the perfect companion to your Jabra headset. Customize your sound with a music equalizer, enable HearThrough for when you need to be aware of your surroundings, and update your headset's software to make sure you're always up to date and getting the most out of your headset.

**Great music when you want it. Anytime concentration when you need it.**

Jabra-engineered speakers ensure that your music sounds exactly as it should, while a snug, in-ear fit provides passive noise cancellation, filtering out background noise to help you concentrate on what you're doing. A built-in busylight acts as a do not disturb, signaling to those around you when you're not to be interrupted.

At a glance:

**Jabra Evolve 65e**

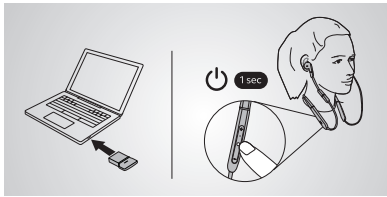
- All day comfort. Never miss a call.
- Professional UC-certified earbuds. Optimized for use outside the office.
- Stay productive on the go. All-day battery.
- Customize sound settings with the Jabra Sound+ app.
- Great music when you want it. Anytime concentration when you need it.



Works with

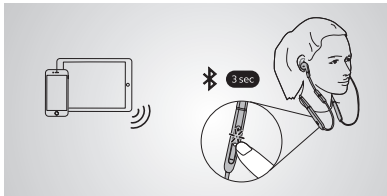


## How to connect



### Computer

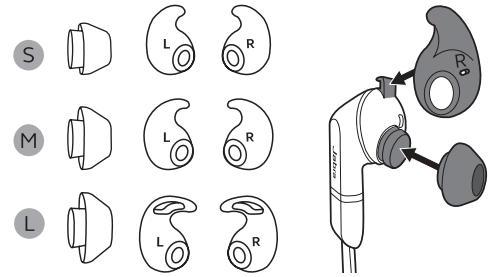
The headset and the Bluetooth adapter are paired and ready for use. Press the Multi-function button to power on the earbuds.



### Mobile device

Ensure the earbuds are powered off, and then hold 3 sec. the Multi-function button until the LED flashes blue. Follow the voice instructions to pair to your smartphone.

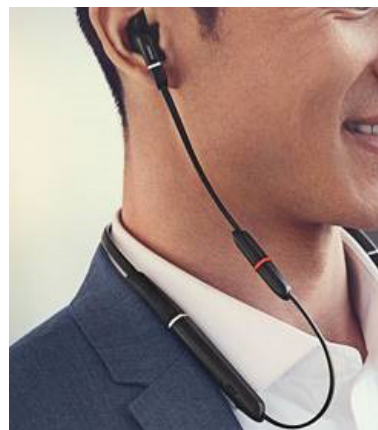
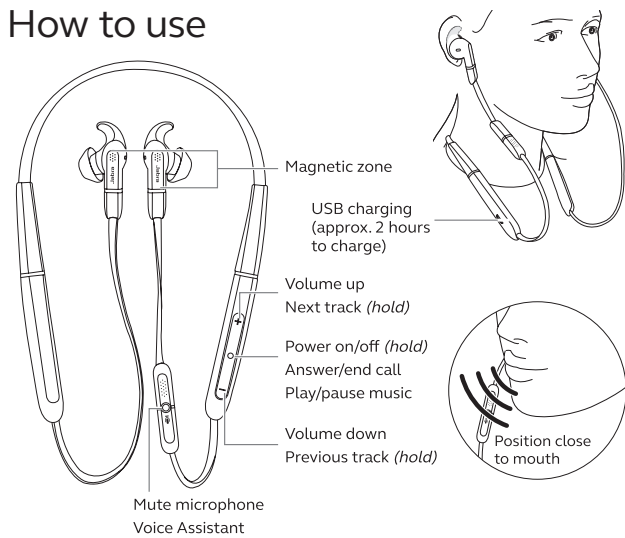
## How to connect



### Select the correct EarGel and EarWing

For optimal audio quality, mix and match the different EarGel and EarWing sizes to find the best fit for your ear.

## How to use



**Busylight** lets colleagues know you are not to be disturbed.



**Magnetic earbuds** conveniently snap together when not in use.

Features	Benefits	Jabra Evolve 65e	
<b>Connectivity</b>	Jabra Link 370 USB Adapter	Wireless range of up to 30m/100ft with PCs	•
	Dual Bluetooth® connectivity for PC, mobile devices	Connect two Bluetooth® devices at the same time	•
	Certifications	Skype for Business, Cisco, Avaya and more	•
	Multiple device pairing	Pair up to 8 devices	•
<b>Audio</b>	Microphone	A four microphone ambient noise cancellation technology	•
	Wind diverting earbud design	Improved wind noise protection	•
<b>Ease of use</b>	Rechargeable battery	Up to 13 hours	•
	Magnets in the earbuds	When the earbuds are connected, your music will pause, your call will be ended or power nap mode activated.	•
	Busylight	Integrated busylight on microphone box acting as a do not disturb signal	•
	Audio Control	Answer/end call-Reject call-Mute microphone-Track control <sup>1</sup> -Play/pause music <sup>1</sup>	•
	Accessories	3 pairs of different-sized EarGels™ (S/M/L)	•
	Voice assistant enabled	One-touch access to Amazon Alexa, Siri®, and Google Assistant™ <sup>2</sup>	•
<b>Compatibility</b>	For compatibility information go to <a href="http://Jabra.com">Jabra.com</a>		



<sup>1</sup> Mobile device only

<sup>2</sup> Operating system dependent